

Amanda Young Men Black Lace: A Comprehensive Guide to the Enigmatic Character

: Unveiling the Enigma of Amanda Young

In the macabre world of horror cinema, Amanda Young stands as a haunting and unforgettable figure. As a central character in the Saw franchise, she embodies the terror and psychological torment that have become synonymous with the series. Her enigmatic nature, marked by her signature black lace attire, has captivated audiences and left an indelible mark on the genre. This comprehensive guide will delve into the intricate tapestry of Amanda Young, exploring her motivations, symbolism, and the profound impact she has had on the horror landscape.

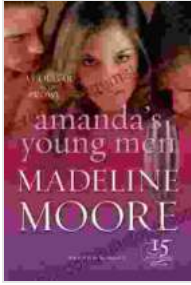
Black Lace: A Symbolism of Trauma and Resilience

Amanda Young's black lace is more than just a costume; it is a potent symbol that permeates her character arc and encapsulates her journey of suffering and survival. The delicate fabric contrasts starkly with the graphic violence and gore that surround her, serving as a poignant reminder of her vulnerability amidst the horrors she endures. The intricate lacework, reminiscent of spider webs, evokes a sense of entrapment and the struggle to escape the clutches of her tormentor, Jigsaw. Yet, within the darkness, the black lace also embodies a flicker of hope, suggesting resilience and a determination to overcome trauma.

Amanda's Young Men (Black Lace) by Madeline Moore

★★★★★ 5 out of 5

Language : English



File size	: 743 KB
Text-to-Speech	: Enabled
Screen Reader	: Supported
Enhanced typesetting	: Enabled
Word Wise	: Enabled
Print length	: 288 pages



The Jigsaw Connection: A Twisted Relationship

Amanda Young's black lace is inextricably linked to her relationship with Jigsaw, the mastermind behind the gruesome games she is forced to play. It was Jigsaw who subjected her to unspeakable horrors, scarring her both physically and emotionally. However, Amanda's attire also hints at a deeper connection between the two characters. The black lace echoes the dark and twisted nature of Jigsaw's games, suggesting a perverse understanding between them. As Amanda progresses through the trials, her black lace becomes a symbol of her determination to confront her past and ultimately challenge the authority of her tormentor.

The Female Gaze in a Male-Dominated Genre

Amanda Young's black lace transcends its symbolic significance and becomes a powerful feminist statement within the male-dominated horror genre. In a realm often characterized by female victimization, Amanda defies expectations. Her agency and resilience, coupled with her striking appearance, challenge traditional gender roles and invite audiences to question the objectification of women in horror. The black lace becomes an empowering symbol, representing Amanda's refusal to conform to societal norms and her determination to fight for her own survival.

Trauma, Survival, and the Power of Choice

Beyond its symbolism, Amanda Young's black lace also reflects the broader themes of trauma, survival, and the power of choice that permeate the Saw franchise. The scars she bears are a constant reminder of the horrors she has endured, yet they also serve as a testament to her strength and resilience. By choosing to confront her past and challenge Jigsaw, Amanda becomes an inspiration for those facing their own struggles. Her black lace attire embodies the transformative power of choice, empowering survivors to reclaim their own narratives and overcome the darkness that may threaten to consume them.

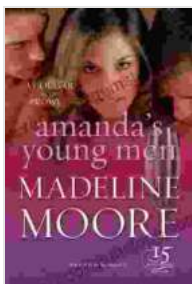
Impact on Horror Cinema: A Lasting Legacy

Amanda Young's black lace has had a profound impact on horror cinema, leaving an enduring legacy that continues to resonate with audiences. Her character has challenged conventions, expanded the boundaries of the genre, and sparked important conversations about trauma, survival, and female empowerment. As a symbol of resilience and defiance, Amanda Young has become an iconic figure, inspiring countless horror enthusiasts and cementing her place in the annals of cinematic history.

: The Enduring Enigma of Amanda Young

Amanda Young's black lace is a powerful and multifaceted symbol that transcends the boundaries of mere costume. It encapsulates her trauma, resilience, and the complex relationship she shares with Jigsaw. By challenging traditional gender roles and exploring the depths of human suffering and survival, Amanda Young has become an enduring enigma in the world of horror. Her black lace attire serves as a haunting reminder of the darkness that can dwell within us all, but it also offers a glimmer of

hope and empowerment, inspiring audiences to confront their own fears and embrace the power of choice.



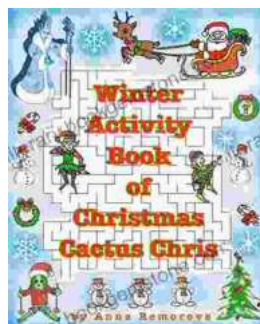
Amanda's Young Men (Black Lace) by Madeline Moore

- ★★★★★ 5 out of 5
- Language : English
- File size : 743 KB
- Text-to-Speech : Enabled
- Screen Reader : Supported
- Enhanced typesetting : Enabled
- Word Wise : Enabled
- Print length : 288 pages



Ceoe Test Practice Questions Exam Review For The Certification Examinations For

The Ceoe exam is a certification exam for the Certified Energy Optimization Engineer (Ceoe) credential. The Ceoe credential is offered by the Association of Energy...



Spot the Difference Mazes, Math Mazes, Word Puzzles, and Find the Shadow Matching: A Journey of Cognitive Development

Puzzle-solving activities have become integral to education and entertainment, captivating individuals of all ages. Among the numerous puzzle types, Spot the...

